

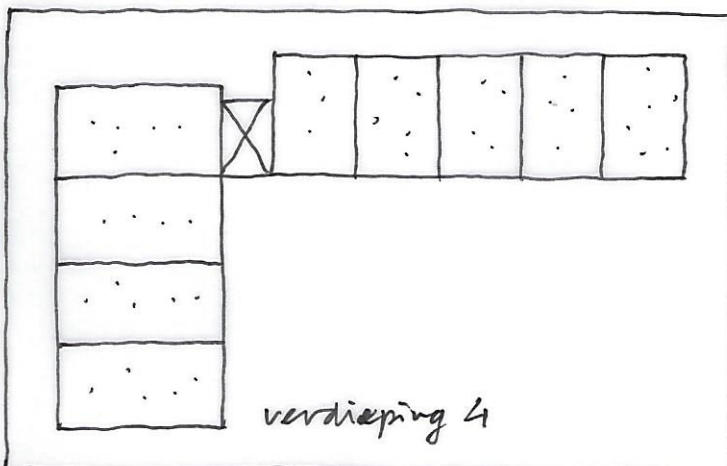
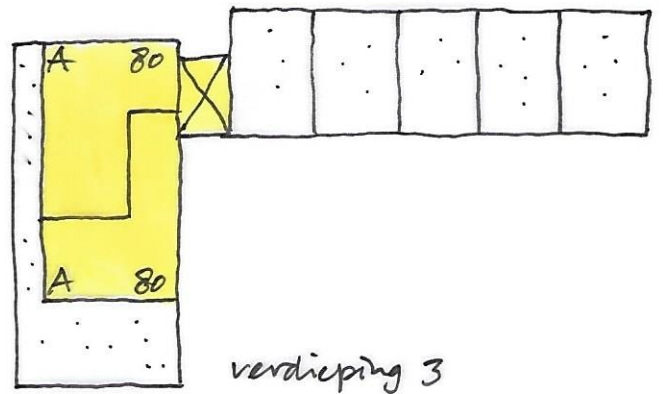
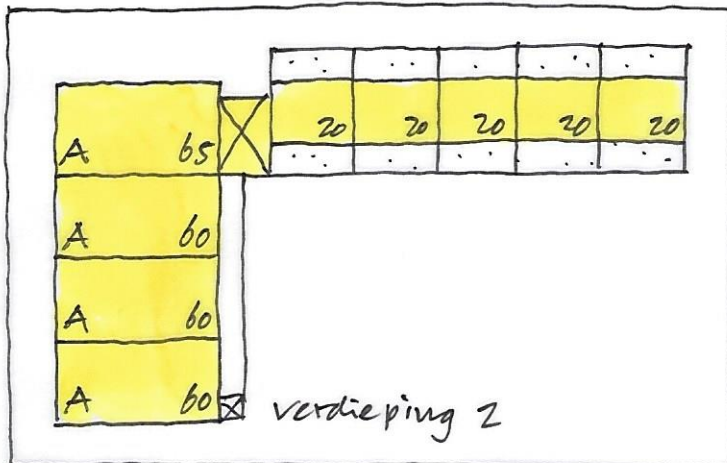
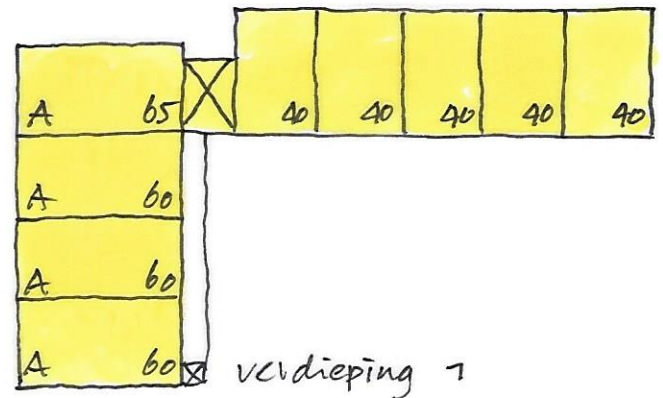
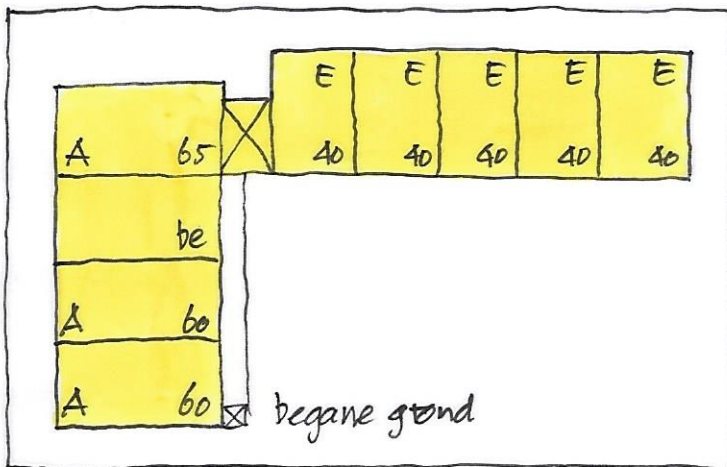
MUIDEN
BREDIUS

onderzoek
capaciteit
woningbouw

april 2019

↑
1:500

A



woningen :

- 5 eengezinswoningen - 100 m²
- 2 appartementen - 80 m²
- 3 appartementen - 65 m²
- 8 appartementen - 60 m²

parkeren :

$$5 \times 1.6 + 13 \times 1.2 = 24 \text{ plaatsen}$$



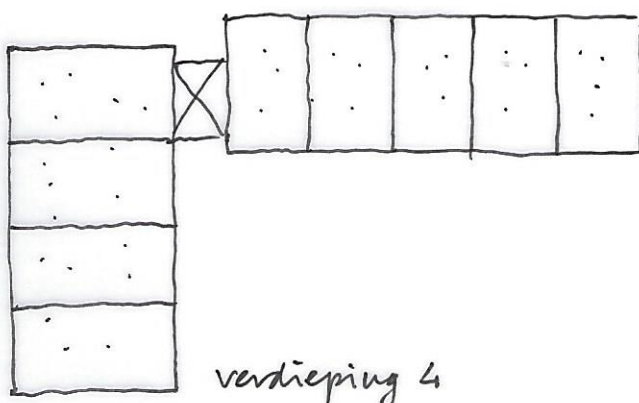
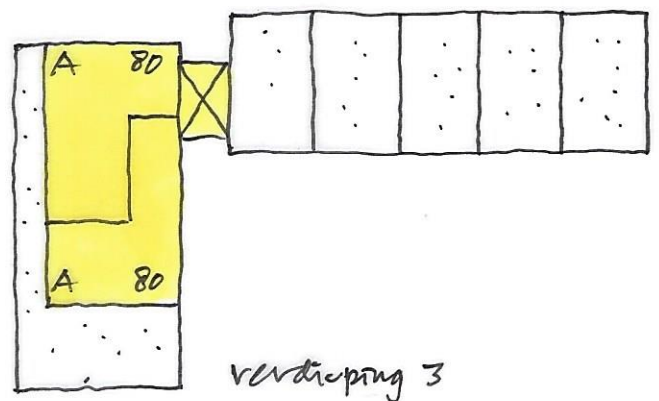
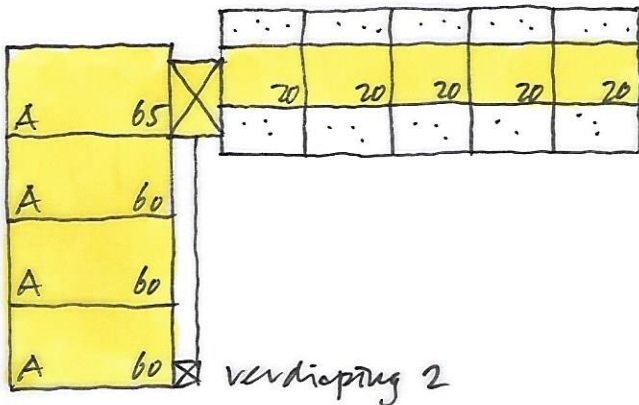
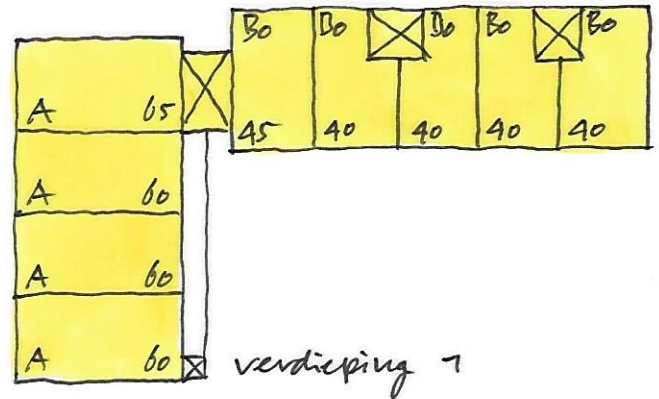
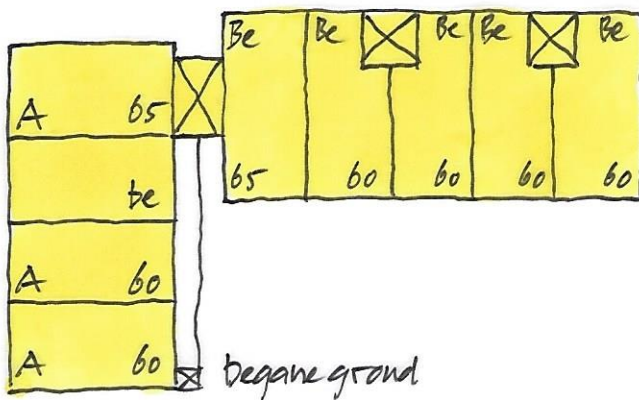
MUIDEN
BREDIUS

onderzoek
capaciteit
woningbouw

april 2019

↑
1:500

B

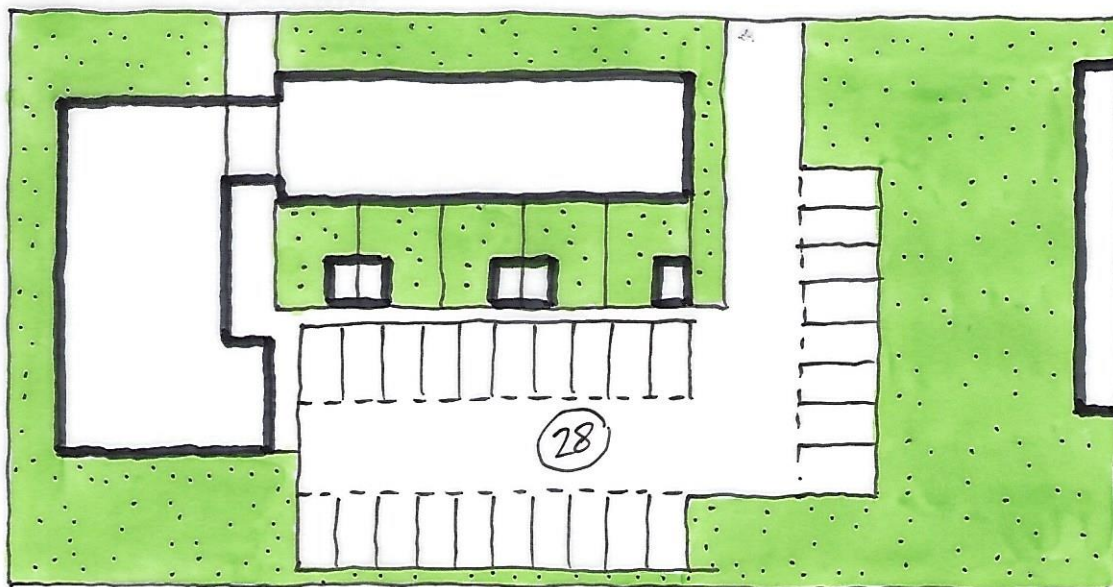


woningen:

- 5 benedenwoningen - 65/60 m²
- 5 bovenwoningen - 65/60 m²
- 2 appartementen - 80 m²
- 3 appartementen - 65 m²
- 8 appartementen - 60 m²

parkeren:

$$23 \times 1.2 = 28 \text{ plaatsen}$$



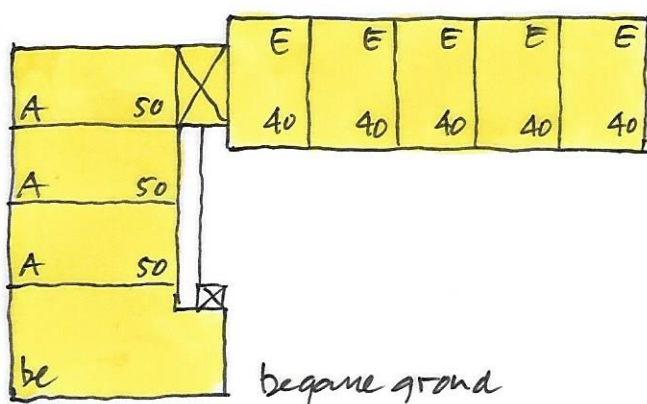
MUIDEN
BREDUS

onder-rook
capaciteit
woningbouw

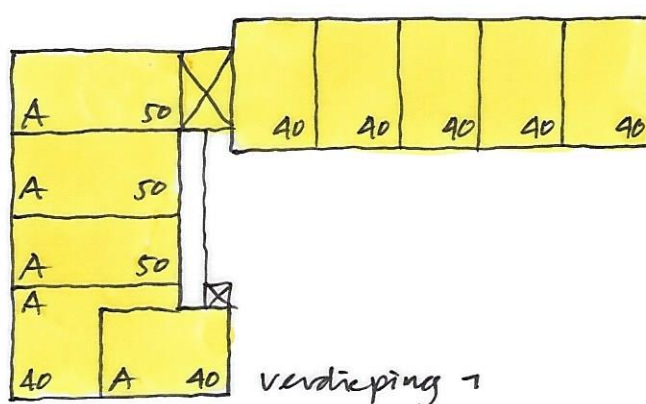
april 2019



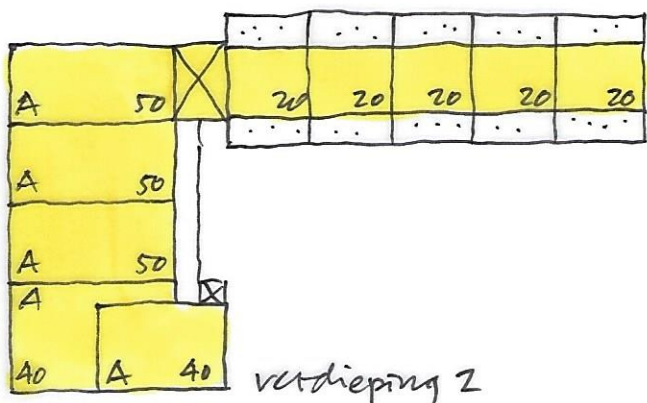
1:500



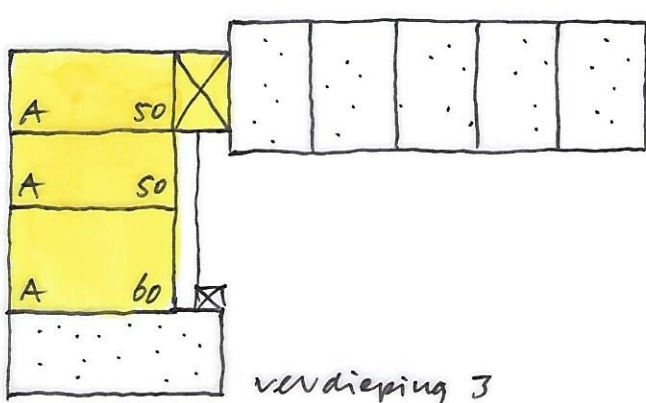
began ground



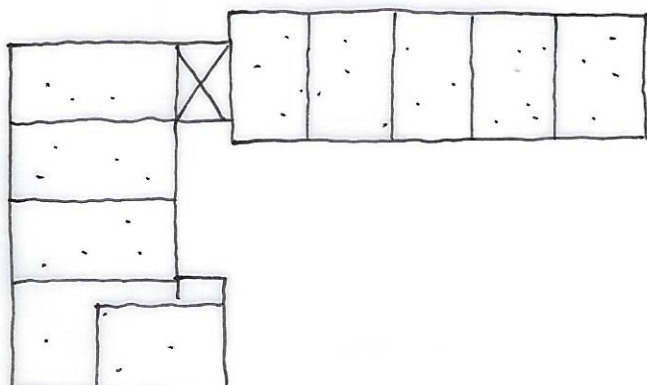
verdieping 1



verdieping 2



verdieping 3



woningen:

5 eengezinswoningen - 100 m²

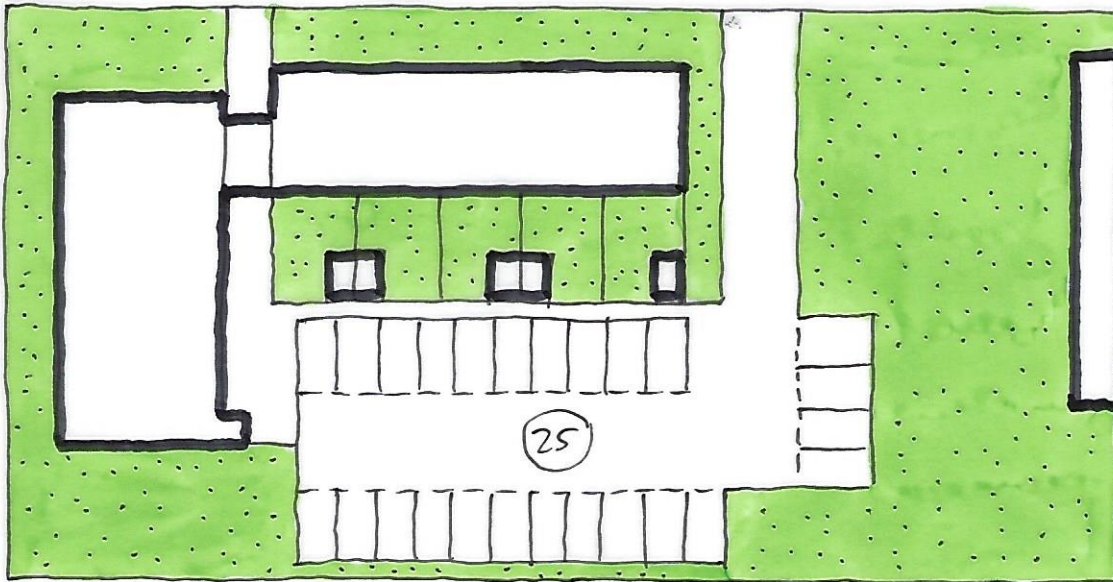
1 appartement - 60 m²

11 appartementen - 50 m²

4 appartamenti - 40 m²

parkeren:

$$5 \times 1.6 + 16 \times 1.2 = 28 \text{ plaatsen}$$



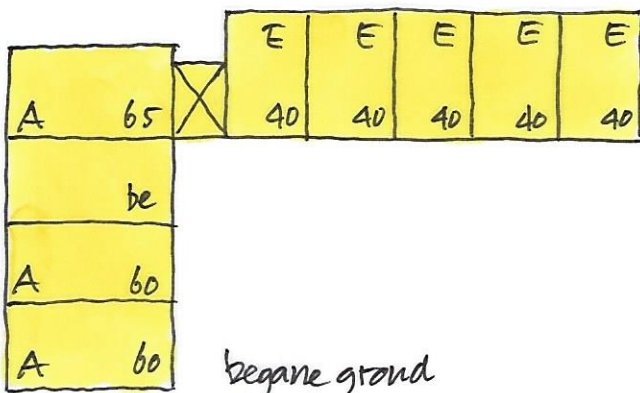
MUIDEN
BREDIUS

onderzoek
capaciteit
woningbouw

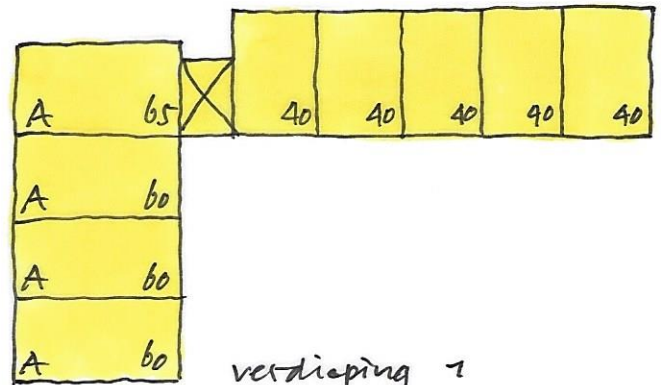
april 2019

↑
1:500

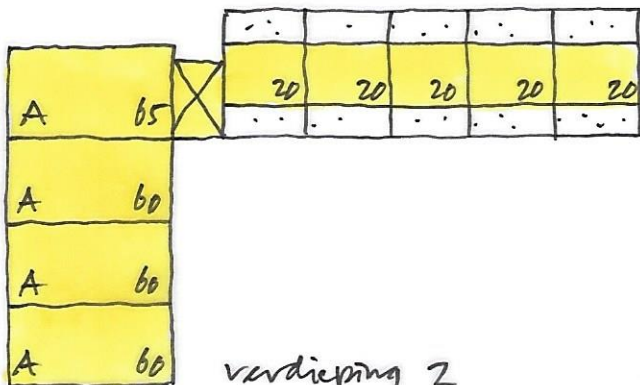
D



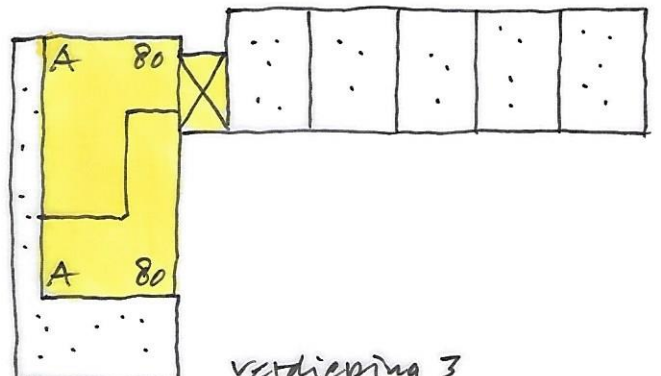
begane grond



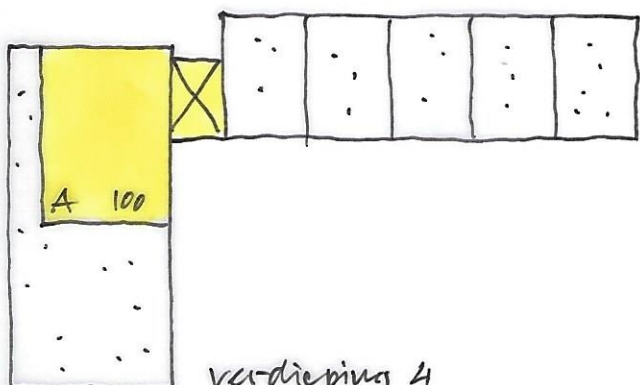
verdieping 1



verdieping 2



verdieping 3



verdieping 4

woningen :

5 eengezinswoningen - 100 m²

1 appartement - 100 m²

2 appartementen - 80 m²

3 appartementen - 65 m²

8 appartementen - 60 m²

parkeren :

$5 \times 1.6 + 14 \times 1.2 = 25$ plaatsen